

Thailand Overview



Thailand has 25 river basins with 254 sub-basins. The major rivers basin in the northeastern of Thailand include Mun River Basin, Chi River Basin, and Mae Klong River Basin.

Mun River Basin is the largest river basin in Thailand.

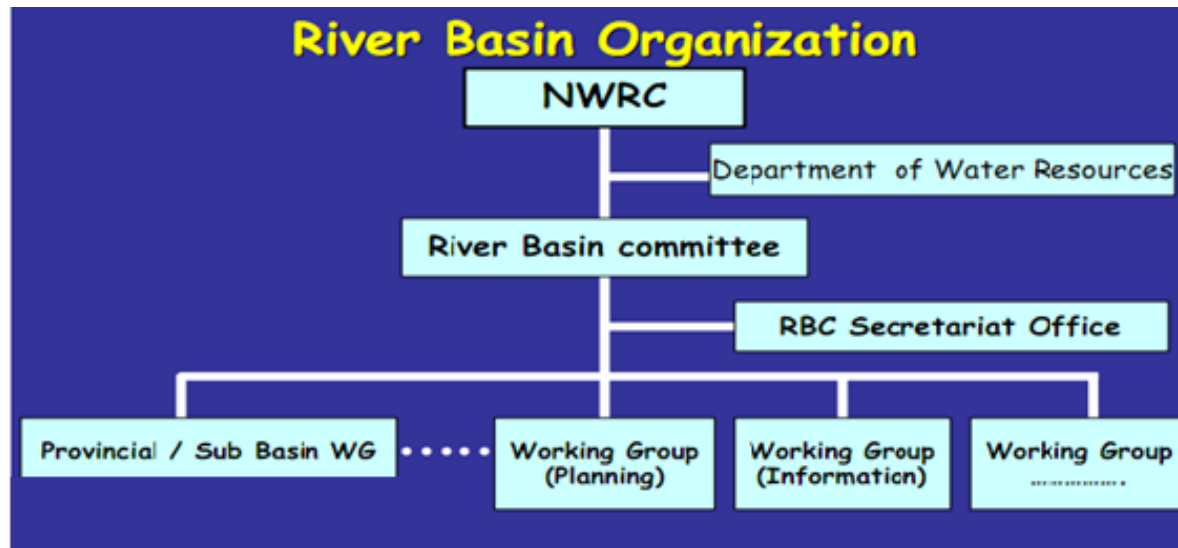


Mun River Basin covers the area about 71,000 sq.km, and consists of 31 sub river basins.

The Mun River flows from the west to the east and joining the Chi River at Ubon Ratchathani Province and discharges into the Mae Khong River.



Water Resources Management in Thailand



The management of water resources in Thailand has been organized at 3 levels :

1. National Level : National Committee responsible in develop water resources policies, strategies and plan in national level.

2. River Basin Level : River Basin Committee responsible in develop and coordinate a river basin management planning.

3. Sub Basin Level : Working group responsible in collect local area data, solve conflicts, coordinate with water user and government, suggestion the local issue to River Basin Committee.

Composition of Mun River Basin Committees

The MUN RBCs are composed by three groups of members

1. Government Agencies	15
2. Stakeholder	
➤ Water Users	10
➤ Local Administration	5
3. Academic, Researchers and NGOs	5
Total	35

Issues on IWRM in sub river basin

➤ **Water Shortage**

- No potential to develop large reservoirs

➤ **Floods**

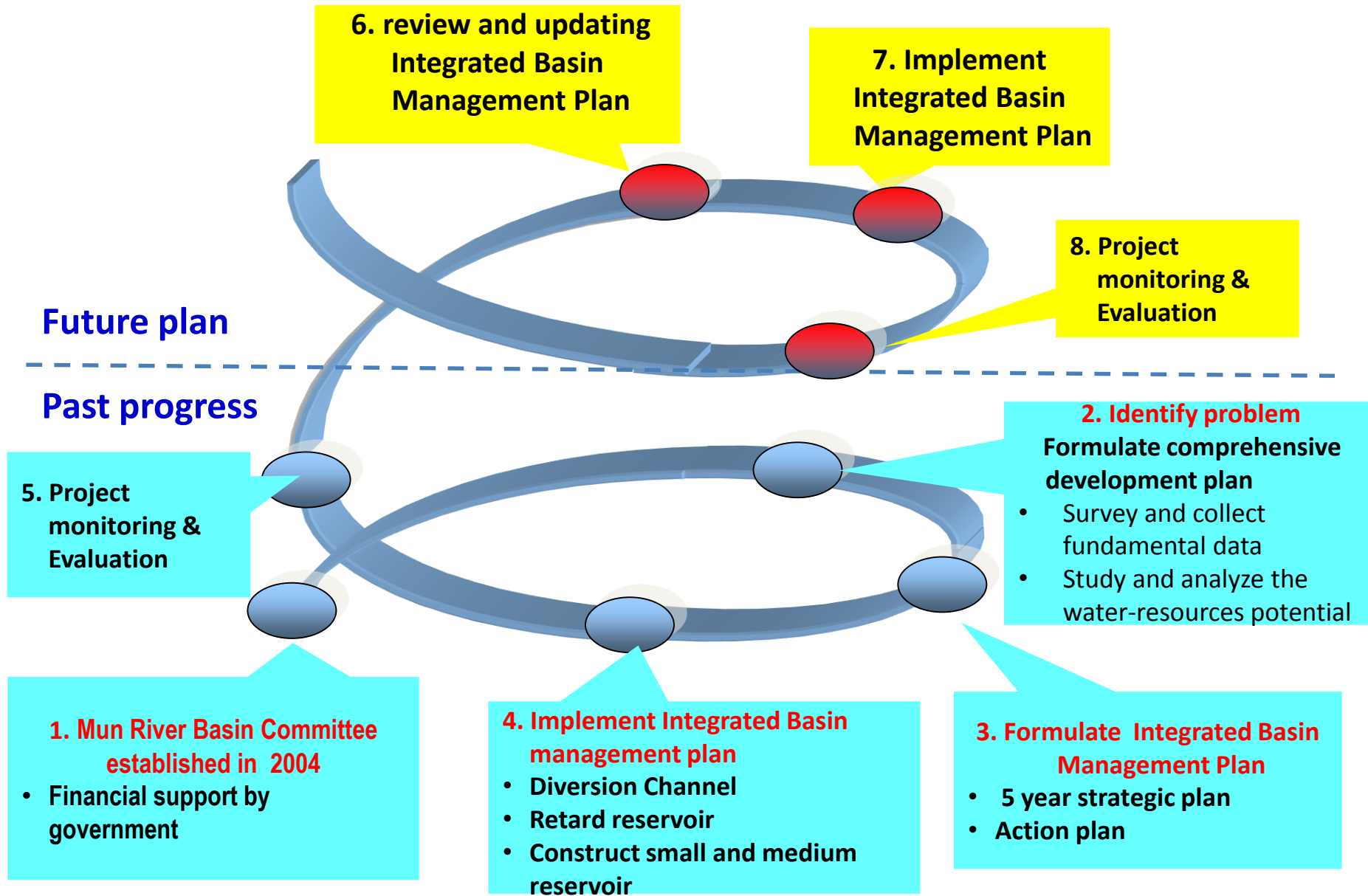
- They have not enough of storage resources
- The main river cannot carry the discharge (Peak Runoff)

Issues on IWRM in sub river basin

➤ **Water Resource Management**

- Lacking of water legislation
- Member of the river basin committee lack understanding in authority and duty of committee
- Budget is limited

IWRM Progress in Mun River Basin



IWRM Progress in Mun River Basin

Step 1 Establish institutional

- **Mun River Basin Committee was established in 2004 by using the Office of the Prime Minister's Regulation on National Water Resource Management**
- **The authority and duties of Mun RBCs are ;**
 - **To submit to the NWRC comments on policies, projects, and solutions to any problem or obstacle to development, utilization, conservation, and any other implementation relating to water resources management**
 - **To formulate water resources management plan**
 - **To compile statistics, data, comment, and recommendations regarding water resources management plan**

IWRM Progress in Mun River Basin

Step 2 Identify problem

- **Formulate comprehensive development plan**
 - Survey and collect fundamental data
 - Study and analyze the water resources potential
 - Collect and analyze the studies and plans undertaken by diverse organizations and suggest guidelines for the future implementation.
- **We provide the opportunity for local stakeholders to participate in identifying problem and solution to water management issues with the help of experts or consultants.**



IWRM Progress in Mun River Basin

Step 3 Formulate Integrated Basin Management Plan

- Mun RBCs going on planning process on the strategic level (5-year plan) and operational level (action plan)
- To submit for budget allocation from the government
- The planning process have done by encouraging participation from all sectors



IWRM Progress in Mun River Basin

Step 4 Implement Integrated Basin management plan

- **Water Shortage** - development a new source of water such as a small and medium reservoir



IWRM Progress in Mun River Basin

Step 4 Implement Integrated Basin management plan

- Flood problem – Construct Diversion channel, retard reservoir



IWRM Progress in Mun River Basin

Step 4 Implement Integrated Basin management plan

- **Water Resource Management** - Capacity building for water user group/Local administration



Step 4 Implement Integrated Basin management plan

- **Water Resource Management** - Water user dialogues and public hearing



Step 4 Implement Integrated Basin management plan

- **Water Resource Management** - Public awareness



IWRM Progress in Mun River Basin

Step 5. Project monitoring & Evaluation

- Site visit
- Direct survey – questionnaire
- Self Assessment Report – RBCs

Future plan

Step 6. Review and updating

Integrated Basin Management plan

Step 7. Implement Integrated Basin Management Plan

Step 8. Project monitoring & Evaluation

Thank you

Potential Issues in the future

- **Water Resources Management**
- **Climate change**

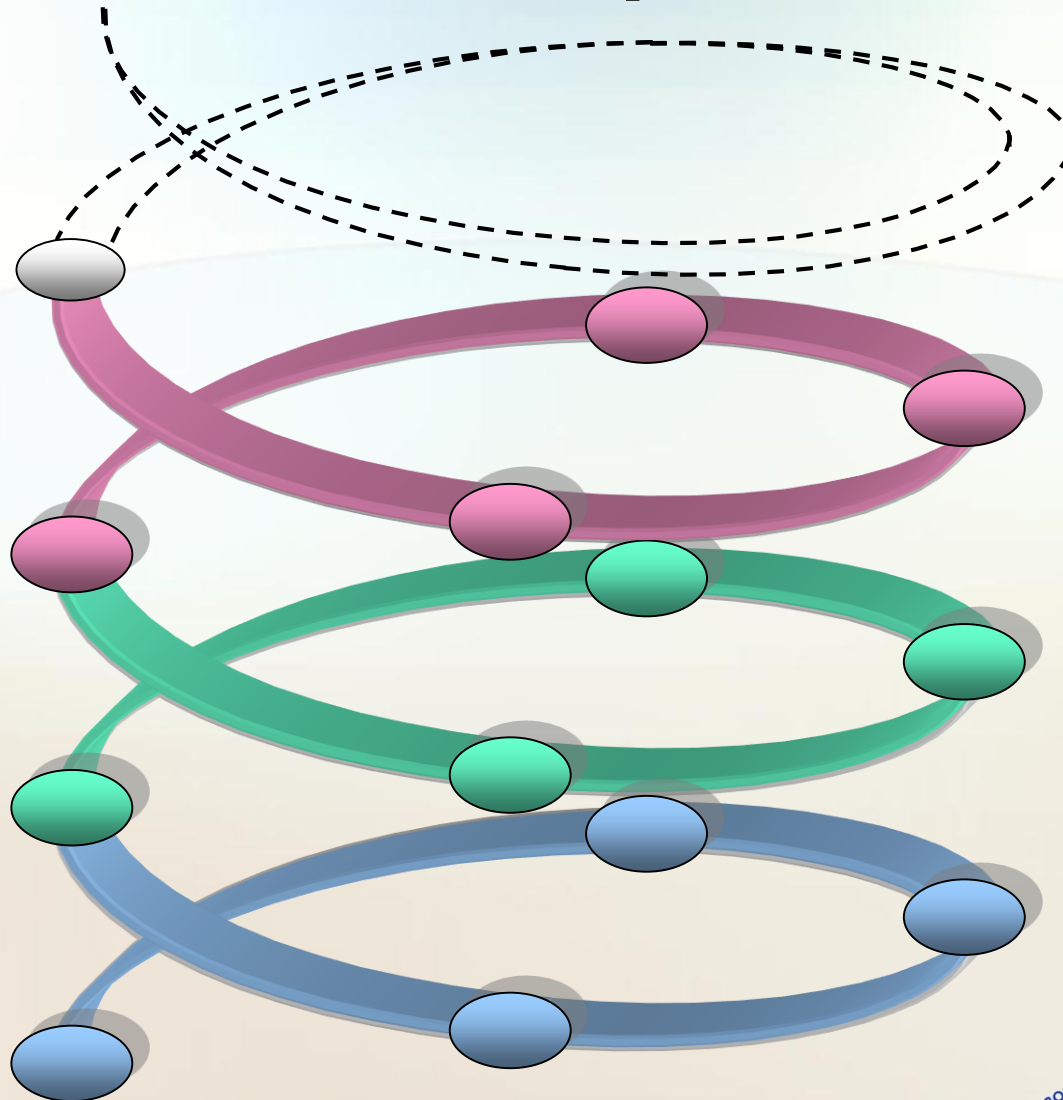
Key for Success

- **Appropriate laws and regulation in IWRM**
- **Coordinate and encourage public participation must be supported (regulatory, engineering, technical and financing)**
- **Monitoring and assessment of IWRM Plan must be conducted**

Implement IWRM with key Success

- **The diversity of working group in knowledge, ability and experience**
- **Coordinate and encourage public participation**
- **Involving stakeholders**
- **Financing support**
- **Monitoring and assessment of IWRM plan**

IWRM spiral



Diversion Channel

